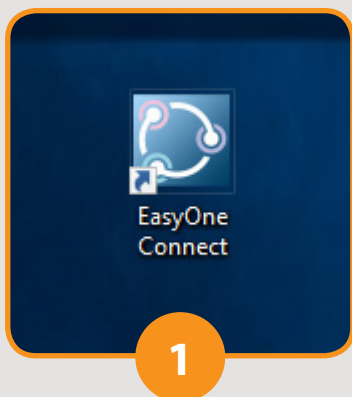


# Easy on-PC | Configuration Guide



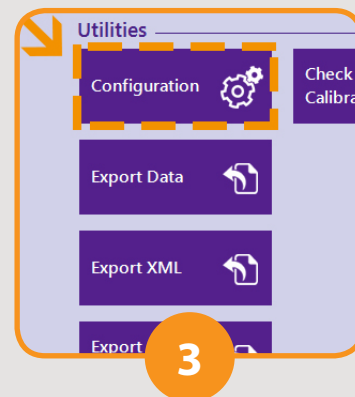
This ten step guide will help configure the EasyOne Connect software for first time use. Following successful installation of the EasyOne Connect software, it is **important** that you follow this step-by-step guide to ensure Spirometry testing is carried out correctly.



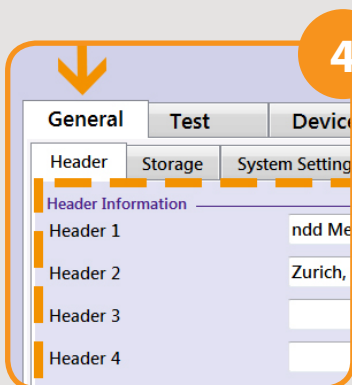
Double Click the EasyOne Connect Icon on the Desktop to open the software.



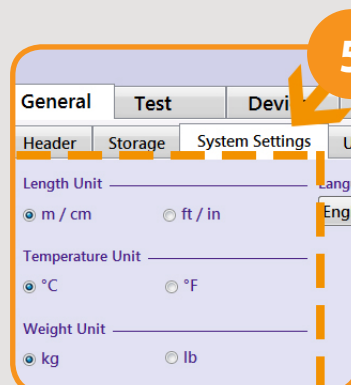
Plug the Easy On Flowhead into the USB port of the PC.



Click on 'Utilities' and then 'Configuration'.



The 'General' tab will already be highlighted as will the 'Header' tab underneath. Fill in the Header with the title that needs to appear on top of the printout (e.g. Surgery name or Study name).



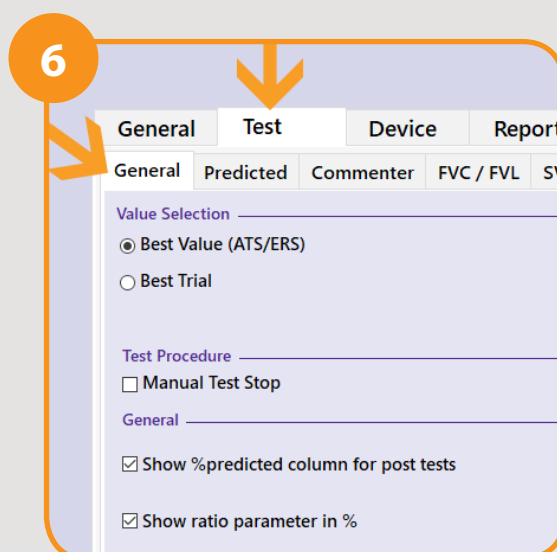
Click on 'System Settings' and make sure that the Height, Temp and Weight units are as required.

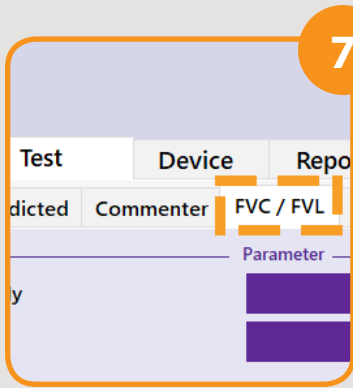
Click on 'Test'. In the 'General' tab that appears underneath the following settings should be applied:-

- Value Selection: Best value
- Test Procedure: Untick Manual test stop
- General: Tick "Show % pred column for post tests"
- Curve Overlay: Should show 'All'

In the 'Predicted' tab the following settings should be applied:-

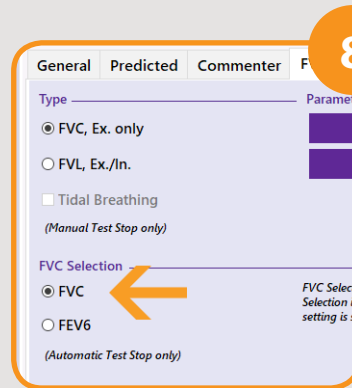
- Predicted Spirometry: ERS/ECCS
- Paediatric Predicted Spiro is not being used so leave as is.
- System Interpretation: NICE (2010)
- Ethnic correction should be left as shown.





7

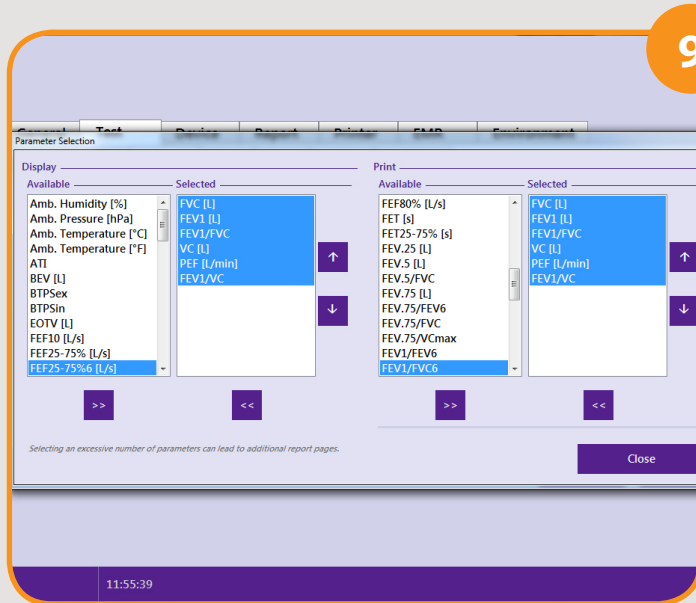
Now click 'FVC/  
FVL' next to the  
'Commenter' tab.



8

'Type' should be 'FVC,  
Ex only.

'FVC Selection' should  
be 'FVC'.



9

Click on the 'Select FVC' icon next to Parameter.  
This opens up another box with all of the available  
parameters. There are 4 columns.

The only parameters required in the 'Selected' columns  
for both Display and for Print are: - **FVC, FEV1, FEV1/  
FVC, VC, PEF [L/min] and FEV1/VC**

Anything else can be moved out of the 'Selected' column  
by highlighting the parameter and clicking the arrow  
button underneath to move it across to the left and  
hence out of the column. To change the order in which  
the parameters are selected, highlight the parameter  
and use the up or down arrow to move it up or down  
the list (Most users would show them in the order  
above). When finished click 'Close'

Now click on the 'SVC' tab. (A)

Ensure that the 'Tidal breathing' option is  
unticked (B) and click on 'Select'. (C)

The only Parameter that needs to be selected  
are 'VC (L)'

Move any other selected  
parameter across in the same way  
as described in point 9 above.

Click 'Close'.

Then click the 'OK' icon towards  
the bottom right of the screen.

This takes you back to the initial  
start menu and the software is  
now set up.

10

